

The Lenox Historic District Commission has determined that the following categories of signs may be constructed or altered without review by the Commission.

Signs meeting the criteria below are eligible for a sign permit from the Building Department without review by the Commission. All other signs must be reviewed by the Commission.

Compliance with current Zoning and Building Code is required for all signs.

LIGHTING

- All sign illumination (neon, LED, internally and externally illuminated, etc.) must be reviewed by the Commission

NUMBER OF SIGNS

- 1 sign per tenant. Requests for additional signs must be reviewed by the Commission.

MATERIAL

- Solid wood or any material painted to be indistinguishable from painted wood.

SHAPES

- Square, Rectangle, Oval, Circle.

DIMENSIONS

- Maximum of 6 sq/ft for a two-faced sign attached to building or on free standing post, or a maximum of 12 sq/ft for signs affixed parallel to the exterior face of the building fronting on a public street. All signs must be no less than ½" thick.

LOCATION

- Signs may be located within the highlighted locations on the Lenox HDC Sign Inventory dated November 20, 2018. Requests for alternative locations must be reviewed by the Commission.

BRACKETS

- Dark Metal

POSTS

- 4"x4" Wood

HEIGHT FOR FREESTANDING SIGNS

- 6' to the top of the post or sign

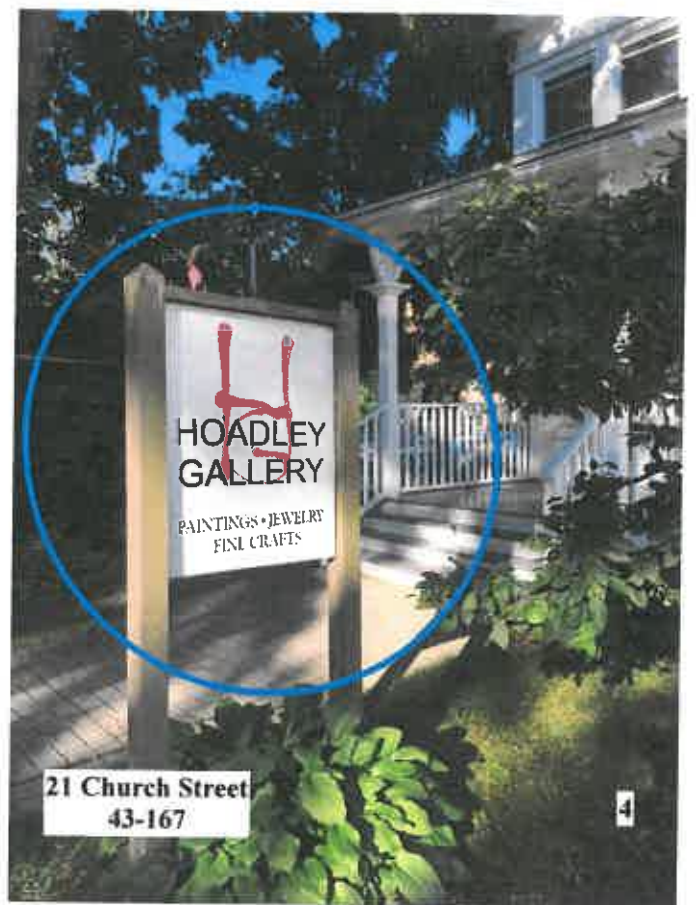
Lenox HDC Sign Inventory

INDEX

| | |
|--------------------------|----------------------|
| Church Street | Pages 1-38 |
| Franklin Street | Pages 39-50 |
| Housatonic Street | Pages 51-64 |
| Kemble Street | Pages 65-66 |
| Main Street | Pages 67-100 |
| Greenwood Street | Pages 101-102 |
| Hubbard Street | Pages 103-104 |
| Walker Street | Pages 105-119 |
| West Street | Pages 120-121 |

CHURCH STREET

1







30 Church Street
43-160

9



31 Church Street
43-169

10



34 Church Street
43-159

11



37 Church Street
43-170

12



37 Church Street
43-170

13



37 Church Street
43-170

14



38 Church Street
43-158

15



47 Church Street
43-177

16



51 Church Street
43-178

17



51 Church Street
43-178

18



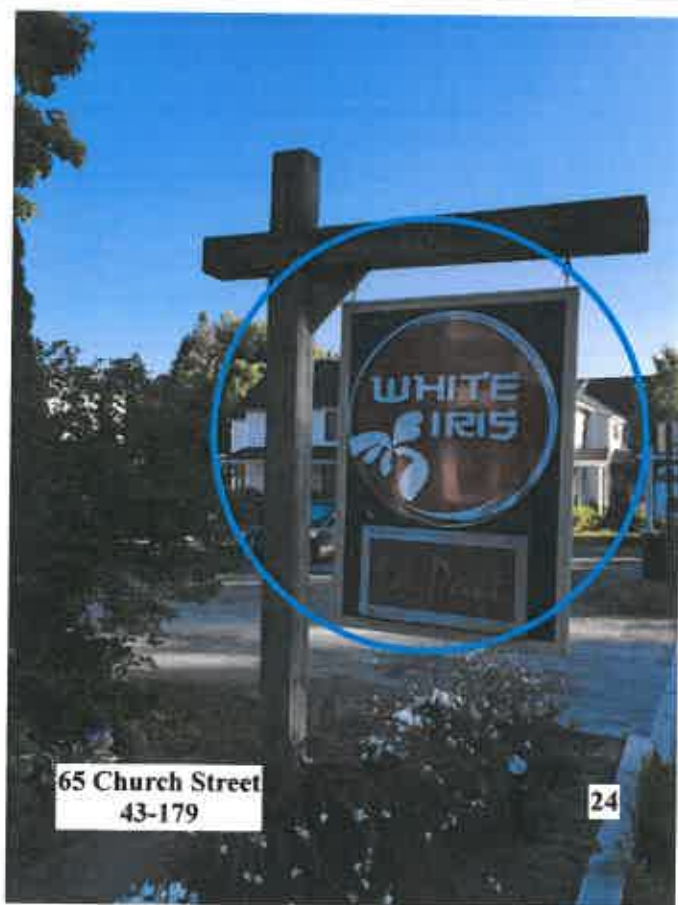
51 Church Street
43-178

19



53 Church Street
43-178

20





65 Church Street
43-179

25



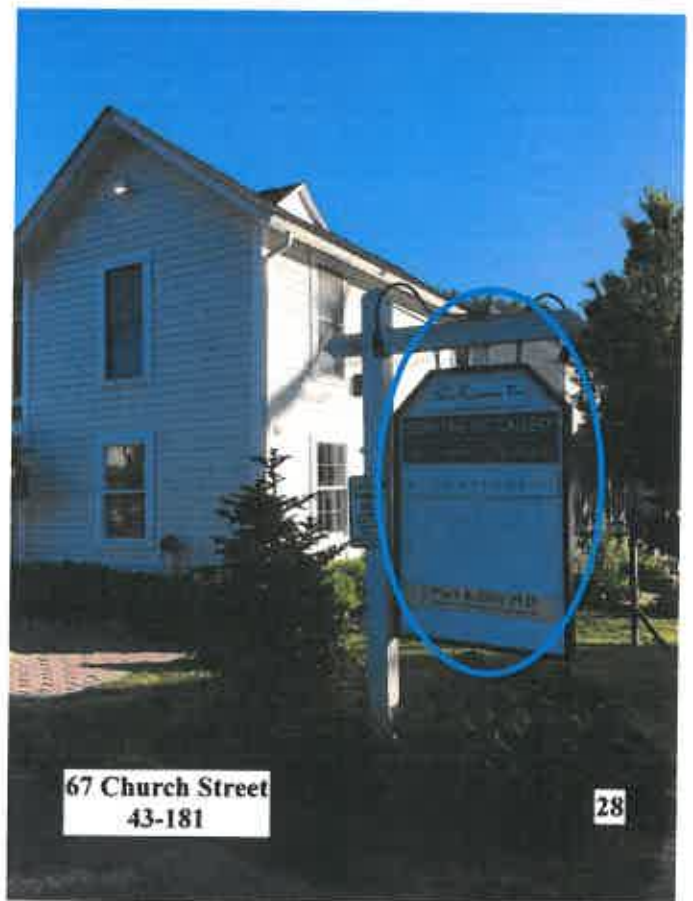
65 Church Street
43-179

26



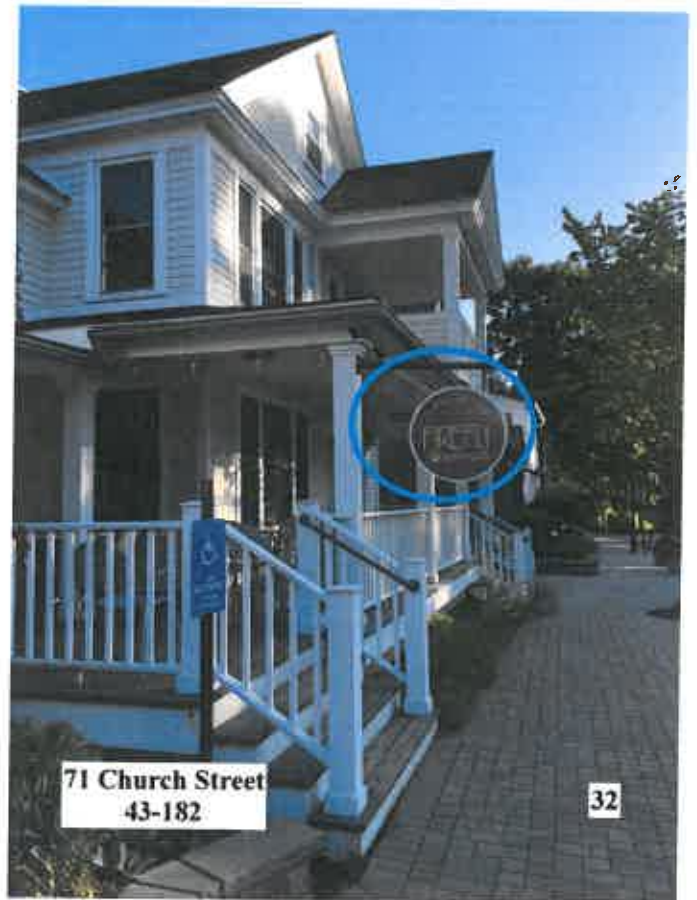
66 Church Street
43-116

27



67 Church Street
43-181

28





72 Church Street
43-115

33



72 Church Street
43-115

34



80 Church Street
43-114

35



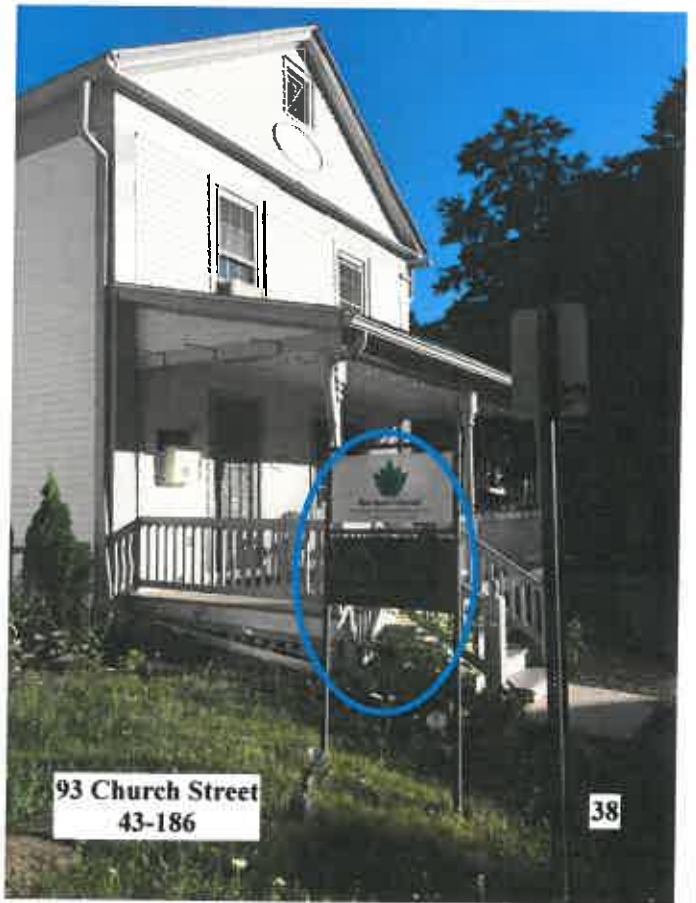
81 Church Street
43-183

36



86 Church Street
43-113

37



93 Church Street
43-186

38

FRANKLIN STREET

39



8 Franklin Street
43-191

40





18 Franklin Street
43-190

45



18 Franklin Street
43-190

46



21 Franklin Street
43-84

47



25 Franklin Street
43-85

48



HOUSATONIC STREET





4 Housatonic Street
43-172

53



11 Housatonic Street
43-175

54



11 Housatonic Street
43-175

55



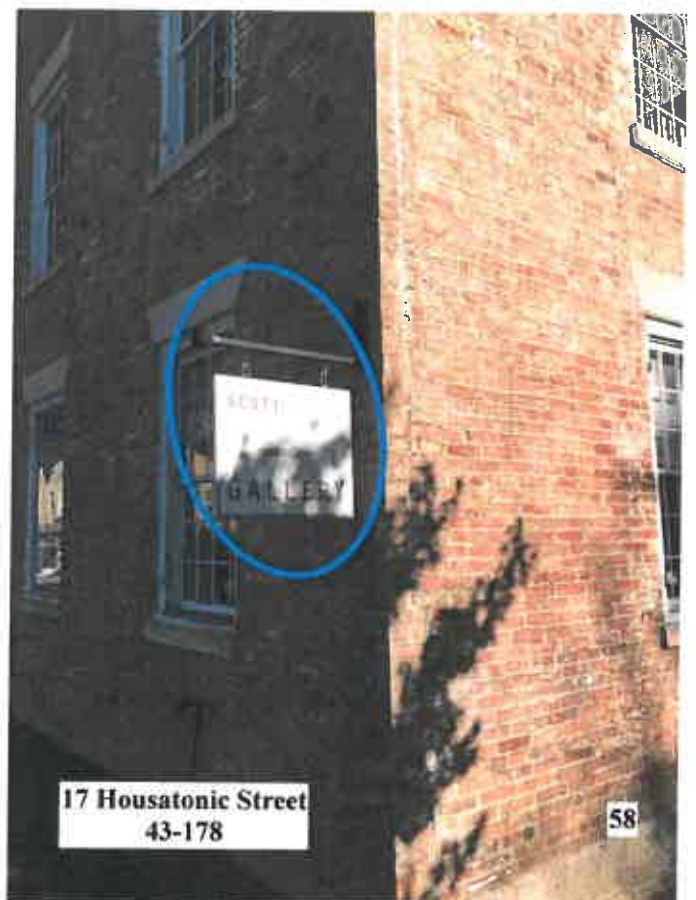
12 Housatonic Street
43-171

56



17 Housatonic Street
43-178

57



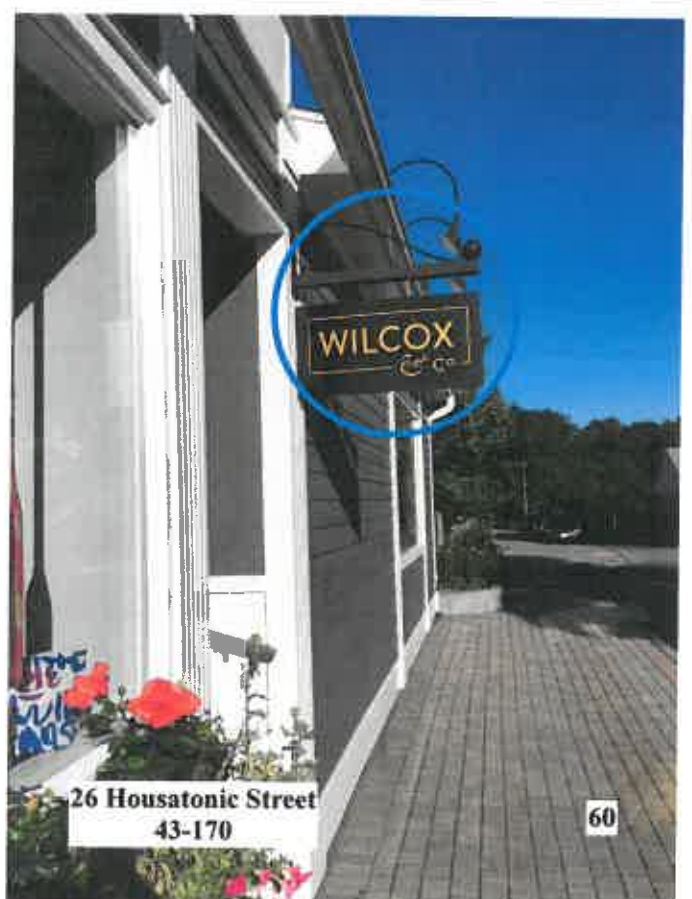
17 Housatonic Street
43-178

58



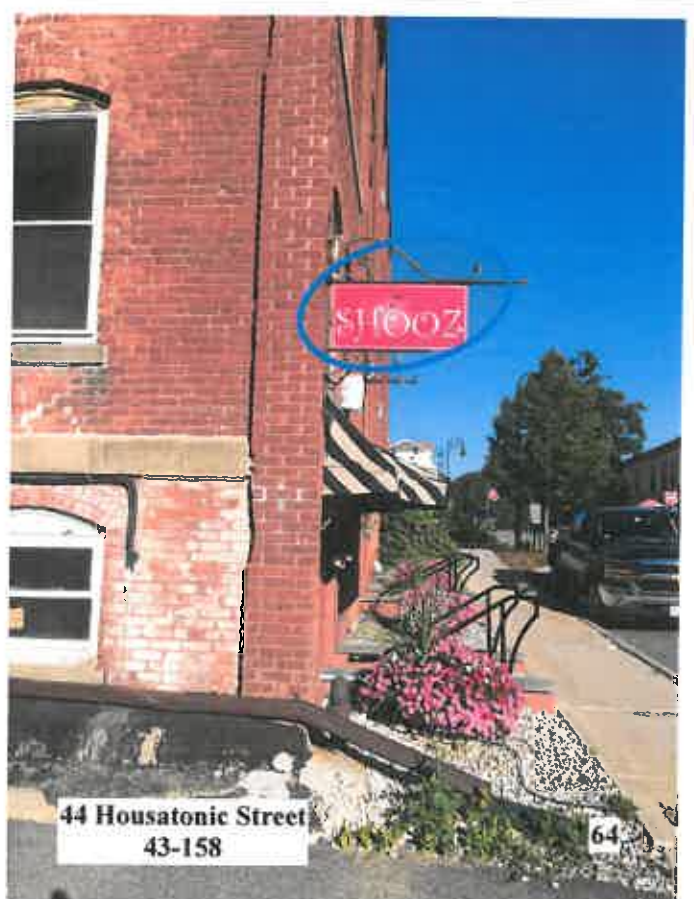
17 Housatonic Street
43-178

59



26 Housatonic Street
43-170

60



KEMBLE STREET

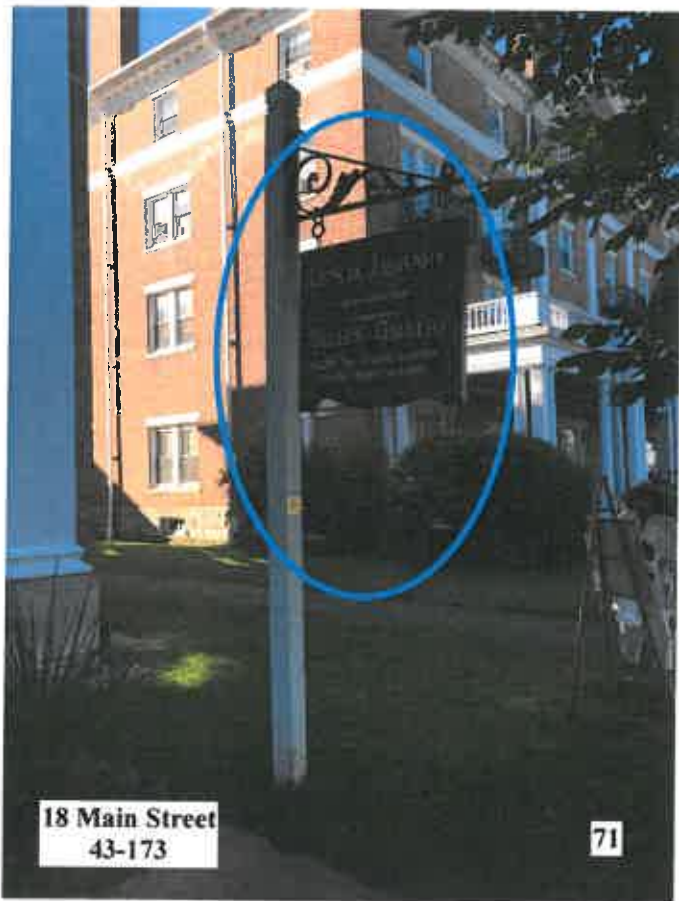
65



MAIN STREET

67







33 Main Street
43-21

73



42 Main Street
43-174

74



42 Main Street
43-174

75



48 Main Street
43-197

76



48 Main Street
43-197

77



48 Main Street
43-197

78



52 Main Street
43-197

79



55 Main Street
43-60

80



55 Main Street
43-60

81



60 Main Street
43-196

82



60 Main Street
43-196

83



65 Main Street
43-61

84



68 Main Street
43-196

85



68 Main Street
43-196

86



68 Main Street
43-196

86



68 Main Street
43-196

88



68 Main Street
43-196

89



68 Main Street
43-196

90



74 Main Street
43-195

91



80 Main Street
43-194

92



80 Main Street
43-194

93



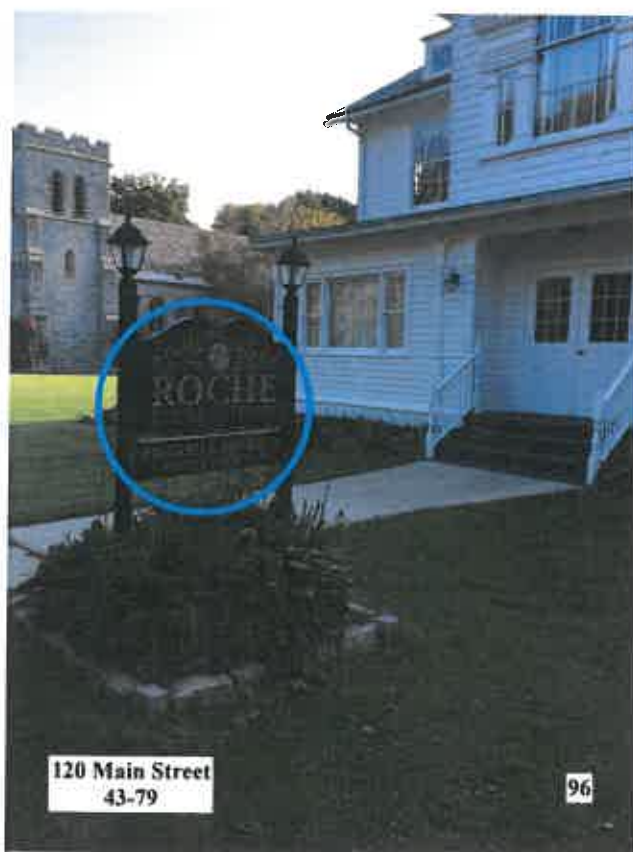
84 Main Street
43-193

94



114 Main Street
43-80

95



120 Main Street
43-79

96



117 Main Street
43-70

97



134 Main Street
46-54

98



135 Main Street
46-59

99



169 Main Street
46-18

100

GREENWOOD STREET

101



102

HUBBARD STREET

103



104

WALKER STREET

105









65 Walker Street
43-145

117



88 Walker Street
40-39

118



91 Walker Street
40-26

119

WEST STREET

