

Lenox Historic District Commission

Town Hall, Land Use Office, 6 Walker Street, Lenox, MA 01240
(413) 637-5504 phone (413) 637-5518
landuse@townoflenox.com

APPLICATION FOR CERTIFICATE


Applicant must file eight (8) copies of the completed application in the Town Clerk's office. Abutters must be notified no later than 14 days prior to the HDC meeting, therefore file your application as soon as possible and allow time for the Land Use Clerk to prepare and mail notices to abutters. You or your representative must be prepared to present your application to the HDC. The HDC holds their meetings on the first and third Tuesday of the Month. Please refer to our Guidelines and Historic District Bylaws that are available online at the Town's website: <http://www.townoflenox.com>

Please Check One:

- ☐ Certificate of Non-Applicability
☒ Certificate of Appropriateness
☐ Certificate of Hardship

Property Information:

Property Owner of Record: PVI Lenox Village LLC - Drew Davis
Mailing Address: 69 Church Street, Lenox MA 01240
Telephone: 413-847-1963 Email address if available ddavis@chestnutrealtyllc.com
Signature of Property Owner of Record: 

Applicant; if different from Owner: Scott Shortt
Address of Subject Property: 21 Housatonic Street, Lenox MA / 51 Church Street Street, Lenox MA
Map Number: 43 Parcel Number: 178
Mailing Address: 69 Church Street, Lenox MA 01240
Telephone: 203-430-5978 Email: scott@scottshortt.com
Signature of Applicant: 

Project Information:

A. Please Check Applicable Activity:

☒ Remodeling ☐ New Construction ☐ Demolition ☐ Sign ☐ Other

B. Describe proposed alterations, construction or demolition.

Attach building drawings and elevations, design details, including color, font, size, placement materials, dimensions, relationship to existing building, photos, and/or whatever else will make the project clear to the Historic District Commission.

Action Taken by Historic District Commission

Approved _____ Date _____

Not Approved _____ Date _____

Signatures

1) _____ 2) _____ 3) _____

4) _____ 5) _____

21 Housatonic Street, Lenox MA / 51 Church Street, Lenox MA

We are seeking a Certificate of Appropriateness from the Lenox HDC addressing two items:

- 1) The replacement of all the building windows, replicating the existing grille patterns using Pella Lifestyle windows
 - a. Detailed product specifications attached
 - b. Window schedule attached

- 2) Changes to on the Front Elevation (South)
 - a. Replacing the oversized retail display windows with a pair of double-hung windows in keeping with the Side Elevation (East) and Rear Elevations (North)
 - i. Reference photos below
 - b. Replacing the first floor picture window on the Rear Elevation (North) with a window that replicates the look of other windows on that Elevation; picture window flanked by double-hung window on each side
 - i. Building elevations with proposed changes attached

Pella® Lifestyle Series Double-Hung

Aluminum EnduraClad® Exterior

Detailed Product Description

Frame

- Select softwood, immersion treated with Pella's EnduraGuard® wood protection formula in accordance with WDMA I.S.-4. The EnduraGuard formula includes three active ingredients for protection against the effects of moisture, decay, stains from mold and mildew. Plus, an additional ingredient adds protection against termite damage.
- Interior exposed surfaces are clear pine.
- Exterior surfaces are clad with aluminum.
- Components are assembled with screws, staples and concealed corner locks.
- Overall frame depth is 5" (127 mm) for a wall depth of 3-11/16" (94 mm).
- Jamb liner shall be high-impact polyvinyl chloride backed by continuous hard-tempered aluminum springs.
- Optional factory applied jamb extensions are available.
- Optional factory installed fold-out installation fins with flexible fin corners.
- Optional factory-applied EnduraClad® exterior trim.

Sash

- Select softwood, immersion treated with Pella's EnduraGuard® wood protection formula in accordance with WDMA I.S.-4. The EnduraGuard formula includes three active ingredients for protection against the effects of moisture, decay, stains from mold and mildew. Plus, an additional ingredient adds protection against termite damage.
- Interior exposed surfaces are clear pine.
- Exterior surfaces are clad with aluminum, lap-jointed and sealed.
- Corners mortised and tenoned, glued and secured with metal fasteners.
- Sash thickness is 1-5/8" (41 mm).
- Sashes tilt for easy cleaning.

Weatherstripping

- Foam with 3 mm skin at head and bottom rail. Thermal-plastic elastomer bulb with slip-coating set into upper sash for tight contact at check rail.
- Secondary polyvinyl chloride leaf-type weatherstrip on bottom sash at sill.
- Jamb liner to seal against sides of sash.

Glazing System

- Quality float glass complying with ASTM C 1036.
- High altitude glazing available.
- Silicone groove-glazed 11/16" [obscure] dual-seal insulating glass [[annealed] [tempered]] [[Advanced] [SunDefense™] [SunDefense+] [AdvancedComfort] [NaturalSun] [NaturalSun+] Low-E [with argon]].

Exterior

- Exterior aluminum surfaces are finished with EnduraClad® protective finish, in a multi-step, baked-on finish.
 - Color is [White] [Tan] [Putty] [Brown] [Poplar White] [Portobello] [Hartford Green] [Morning Sky Gray] [Brick Red] [Black].

Interior

- [Unfinished, ready for site finishing] [factory primed with one coat acrylic latex] [factory prefinished [White] [Linen] [Bright White] [stain₁]].

Hardware

- Galvanized block-and-tackle balances are connected to sash with a polyester cord and concealed within the frame.
- Factory installed self-aligning surface-mounted sash lock. Two sash locks on units with frame width 33-1/4" and greater.
- Optional Sash lift furnished for field installation. Two lifts on units with frame width 33-1/4" and greater.
- Finish is [baked enamel [Champagne] [White] [Brown] [Matte Black]] [Satin Brass] [Satin Nickel].
- Champagne locks are standard on unfinished units; White locks are standard on factory prefinished white units.

Optional Products

Grilles

- Simulated-Divided-Light [with optional spacer]
 - 7/8" Grilles permanently bonded to the interior and exterior of glass.
 - Patterns are [Traditional] [Prairie] [Cross] [Top Row] [Custom – Equally Divided].
 - Interior surfaces are [unfinished, ready for site finishing] [factory primed] [pine: factory prefinished [White] [Linen White] [Bright White] [stain₁]].
 - Exterior grilles to match the exterior cladding color.
 - Available only on units glazed with Low-E insulated glass with argon.

– or –

- Grilles-Between-the-Glass₂
 - Insulating glass contains 3/4" contoured aluminum grilles permanently installed between two panes of glass.
 - Patterns are [Traditional] [9-Lite Prairie] [Top Row] [Custom – Equally Divided].
 - Interior color is [White] [Ivory] [Tan₃] [Brickstone] [Black] [Putty₃] [Brown₃] [Harvest] [Cordovan].
 - Exterior color [matched to the exterior cladding color] [White]₄.

Flat Insect Screen

- InView™ screens
 - Full-size Vinyl-coated 18/18 mesh fiberglass screen cloth complying with the performance requirements of SMA 1201, set in aluminum frame fitted to outside of window, supplied complete with all necessary hardware.
 - Screen frame finish is baked enamel, color to match window cladding.

Hidden Screen (Select Markets Only)₁

- Vinyl-coated 18/18 mesh fiberglass screen cloth, set in aluminum channels hidden within the sash, supplied complete with all necessary hardware.
-

Hardware

- Optional factory applied limited opening device available for vent units in steel, nominal 3-3/4" opening.
- Optional window opening control device available for field installation. Device allows window to open less than 4" with normal operation, with a release mechanism that allows the sash to open completely. Complies with ASTM F2090-10.

Sensors

- Optional factory installed integrated security sensors available in vent units.

(1) Contact your local Pella sales representative for current designs, color options and regional market availability.

(2) Available on units glazed with Low-E insulated glass with argon, and obscure insulated glass.

(3) Tan, brown and putty Interior GBG colors are available only with matching interior and exterior colors.

(4) Appearance of exterior grille color will vary depending on Low-E coating on glass.

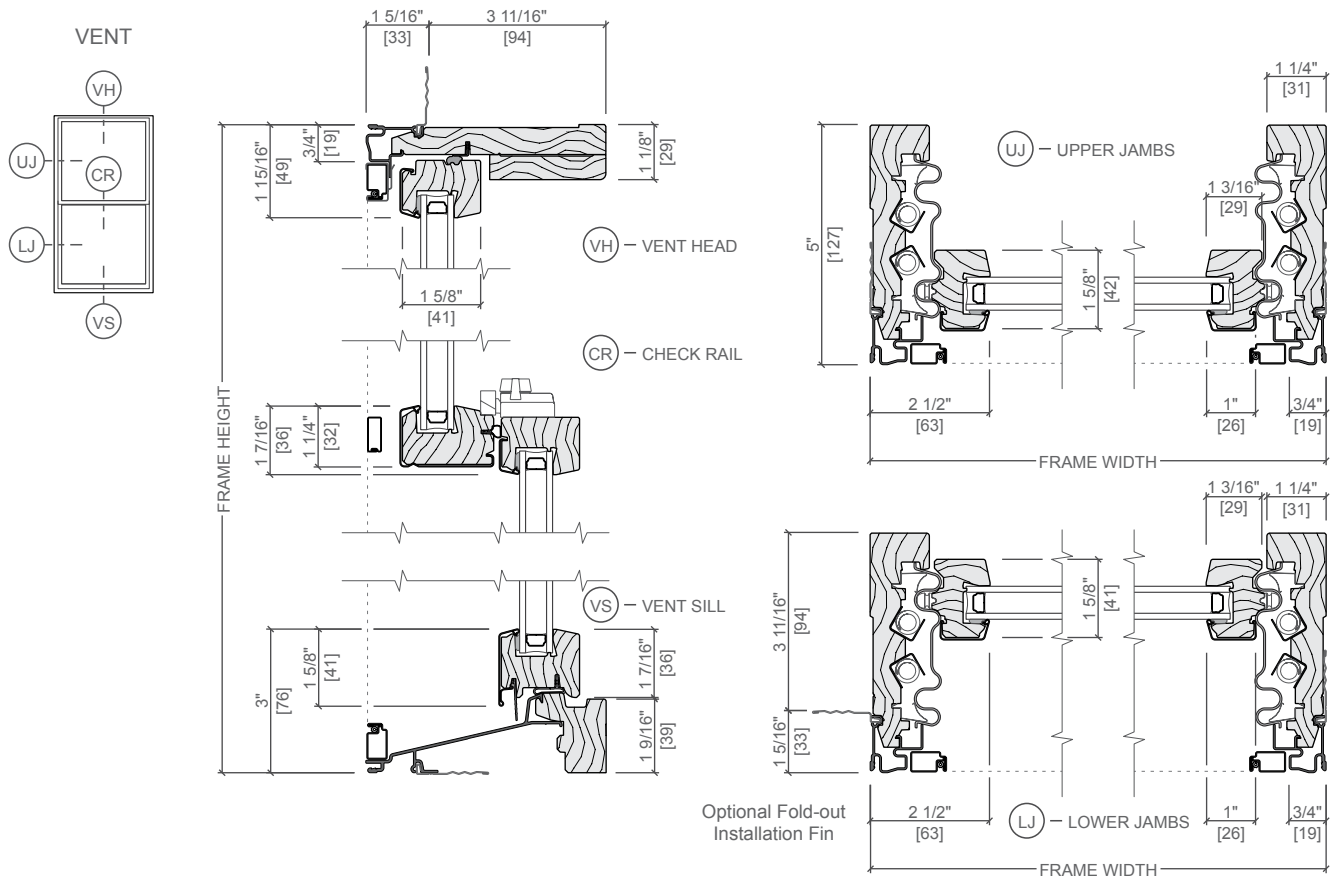
GRILLE DETAILS:





Lifestyle Series Double-Hung

Unit Sections



Scale 3" = 1' 0"

All dimensions are approximate.



Contract - Detailed

Pella Window and Door Showroom of Greenfield
155 Main Street
Greenfield, MA 01301
Phone: (413) 774-7231 **Fax:**

Sales Rep Name: McDaniel, Trevor
Sales Rep Phone: (413) 575-0871
Sales Rep Fax:
Sales Rep E-Mail: tmcdaniel@pellasales.com

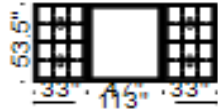
Customer Information	Project/Delivery Address	Order Information
Scott Shortt 21 Housatonic St Lenox, MA 01240-2519 Primary Phone: (203) 4305978 Mobile Phone: Fax Number: E-Mail: scott@scottshortt.com Contact Name: Great Plains #: 1007658678 Customer Number: 1011401925 Customer Account: 1007658678	Scott Short 21 Housatonic St Lenox MA 21 Housatonic St Lot # Lenox, MA 01240 County: Owner Name: Scott Shortt Owner Phone: (203) 4305978	Quote Name: Scott Short Lifestyle Clad GBG 2 12 2024 Order Number: 184 Quote Number: 17817415 Order Type: Non-Installed Sales Wall Depth: Payment Terms: Tax Code: MASS Cust Delivery Date: None Quoted Date: 2/13/2024 Contracted Date: Booked Date: Customer PO #:

Customer Notes: This is a Wood/Clad Budget
Pella Lifestyle with Grilles Between the glass

** This option uses Grilles Between the glass and therefore only standard pattern for the east stair way
Pella Lifestyle Black Clad Color Ext-
Prefinished White
Advanced Low E Glass- Tempered where noted
Full Screens on Double Hungs
Matte Black Cam Lock Hardware on Double Hungs
Basic jamb depth for field finished extensions and trim

No Casing for the Coverd unit at this time- Need to get final pricing on the Springline Window

Line #	Location:	Attributes	Item Price	Qty	Ext'd Price
10	Basement	Lifestyle, 3-Wide Double Hung, 113 X 53.5, Without HGP, Black	\$2,869.38	2	\$5,738.76



PK #

2157


Viewed From Exterior

1: Non-Standard Size Double Hung, Equal**Frame Size:** 33 X 53 1/2**Unit Type:** No Program**General Information:** No Package, Without Hinged Glass Panel, Clad, Pine, 5", 3 11/16", Jambliner Color: **Gray****Exterior Color / Finish:** **Standard Enduraclad, Black****Interior Color / Finish:** **Prefinished White Paint Interior****Glass:** **Insulated Low-E AdvancedComfort Low-E Insulating Glass Argon Non High Altitude STC 5mm/3mm Combination****Hardware Options:** **Cam-Action Lock, 1 Lock, Matte Black, No Limited Opening Hardware, Order Sash Lift, 1 Lift, No Integrated Sensor****Screen:** **Full Screen, Black, InView™****Performance Information:** **U-Factor 0.27, SHGC 0.26, VLT 0.48, CPD PEL-N-35-00451-00001, Performance Class LC, PG 40, Calculated Positive DP Rating 40, Calculated Negative DP Rating 40, Year Rated 08|11, STC 31, OITC 27, Clear Opening Width 29.812, Clear Opening Height 23.5, Clear Opening Area 4.865153, Egress Does not meet typical United States egress, but may comply with local code requirements****Grille:** **GBG, No Custom Grille, 3/4" Contour, Traditional (3W2H / 3W2H), White, Black****2: 4753.5 Fixed Sash Set****Frame Size:** **47 X 53 1/2****General Information:** **No Package, Without Hinged Glass Panel, Clad, Pine, 5", 3 11/16"****Exterior Color / Finish:** **Standard Enduraclad, Black****Interior Color / Finish:** **Prefinished White Paint Interior****Glass:** **Insulated Low-E AdvancedComfort Low-E Insulating Glass Argon Non High Altitude STC 5mm/3mm Combination****Performance Information:** **U-Factor 0.24, SHGC 0.30, VLT 0.55, CPD PEL-N-229-01037-00001, Performance Class LC, PG 30, Calculated Positive DP Rating 30, Calculated Negative DP Rating 30, Year Rated 08|11, STC 30, OITC 28****Grille:** **No Grille,****3: Non-Standard Size Double Hung, Equal****Frame Size:** **33 X 53 1/2****Unit Type:** **No Program****General Information:** **No Package, Without Hinged Glass Panel, Clad, Pine, 5", 3 11/16", Jambliner Color: Gray****Exterior Color / Finish:** **Standard Enduraclad, Black****Interior Color / Finish:** **Prefinished White Paint Interior****Glass:** **Insulated Low-E AdvancedComfort Low-E Insulating Glass Argon Non High Altitude STC 5mm/3mm Combination****Hardware Options:** **Cam-Action Lock, 1 Lock, Matte Black, No Limited Opening Hardware, Order Sash Lift, 1 Lift, No Integrated Sensor****Screen:** **Full Screen, Black, InView™****Performance Information:** **U-Factor 0.27, SHGC 0.26, VLT 0.48, CPD PEL-N-35-00451-00001, Performance Class LC, PG 40, Calculated Positive DP Rating 40, Calculated Negative DP Rating 40, Year Rated 08|11, STC 31, OITC 27, Clear Opening Width 29.812, Clear Opening Height 23.5, Clear Opening Area 4.865153, Egress Does not meet typical United States egress, but may comply with local code requirements****Grille:** **GBG, No Custom Grille, 3/4" Contour, Traditional (3W2H / 3W2H), White, Black****Vertical Mull 1:** **FactoryMull, Standard Joining Mullion, Mull Design Pressure- 20, Overall Thru Direction- Vertical****Vertical Mull 2:** **FactoryMull, Standard Joining Mullion, Mull Design Pressure- 20, Overall Thru Direction- Vertical****Wrapping Information:** **Foldout Fins, Factory Applied, No Exterior Trim, 3 11/16", 5", Factory Applied, Pella Recommended Clearance, Perimeter Length = 333".**

Rough Opening: 113 - 3/4" X 54 - 1/4

Line #	Location:	Attributes			
15	Basement	Lifestyle, Double Hung, 41 X 65, Without HGP, Black	Item Price	Qty	Ext'd Price
<div><div><div><div><div><div></div><div></div><div></div><div></div><div></div><div></div><div></div><div></div><div></div><div></div><div></div><div></div><div></div><div></div><div></div><div></div><div></div><div></div><div></div><div></div><div></div><div></div><div></div><div></div><div></div><div></div><div></div><div></div><div></div><div></div><div></div><div></div><div></div><div></div><div></div><div></div><div></div><div></div><div></div><div></div><div></div><div></div><div></div><div></div><div></div><div></div><div></div><div></div><div></div><div></div><div></div><div></div><div></div><div></div><div></div><div></div><div></div><div></div><div></div><div></div><div></div><div></div><div></div><div></div><div></div><div></div><div></div><div></div><div></div><div></div><div></div><div></div><div></div><div></div><div></div><div></div><div></div><div></div><div></div><div></div><div></div><div></div><div></div><div></div><div></div><div></div><div></div><div></div><div></div><div></div><div></div><div></div><div></div><div></div><div></div><div></div><div></div><div></div><div></div><div></div><div></div><div></div><div></div><div></div><div></div><div></div><div></div><div></div><div></div><div></div><div></div><div></div><div></div><div></div><div></div><div></div><div></div><div></div><div></div><div></div><div></div><div></div><div></div><div></div><div></div><div></div><div></div><div></div><div></div><div></div><div></div><div></div><div></div><div></div><div></div><div></div><div></div><div></div><div></div><div></div><div></div><div></div><div></div><div></div><div></div><div></div><div></div><div></div><div></div><div></div><div></div><div></div><div></div><div></div><div></div><div></div><div></div><div></div><div></div><div></div><div></div><div></div><div></div><div></div><div></div><div></div><div></div><div></div><div></div><div></div><div></div><div></div><div></div><div></div><div></div><div></div><div></div><div></div><div></div><div></div><div></div><div></div><div></div><div></div><div></div><div></div><div></div><div></div><div></div><div></div><div></div><div></div><div></div><div></div><div></div><div></div><div></div><div></div><div></div><div></div><div></div><div></div><div></div><div></div><div></div><div></div><div></div><div></div><div></div><div></div><div></div><div></div><div></div><div></div><div></div><div></div><div></div><div></div><div></div><div></div><div></div><div></div><div></div><div></div><div></div><div></div><div></div><div></div><div></div><div></div><div></div><div></div><div></div><div></div><div></div><div></div><div></div><div></div><div></div><div></div><div></div><div></div><div></div><div></div><div></div><div></div><div></div><div></div><div></div><div></div><div></div><div></div><div></div><div></div><div></div><div></div><div></div><div></div><div></div><div></div><div></div><div></div><div></div><div></div><div></div><div></div><div></div><div></div><div></div><div></div><div></div><div></div><div></div><div></div><div></div><div></div><div></div><div></div><div></div><div></div><div></div><div></div><div></div><div></div><div></div><div></div><div></div><div></div><div></div><div></div><div></div><div></div><div></div><div></div><div></div><div></div><div></div><div></div><div></div><div></div><div></div><div></div><div></div><div></div><div></div><div></div><div></div><div></div><div></div><div></div><div></div><div></div><div></div><div></div><div></div><div></div><div></div><div></div><div></div><div></div><div></div><div></div><div></div><div></div><div></div><div></div><div></div><div></div><div></div><div></div><div></div><div></div><div></div><div></div><div></div><div></div><div></div><div></div><div></div><div></div><div></div><div></div><div></div><div></div><div></div><div></div><div></div><div></div><div></div><div></div><div></div><div></div><div></div><div></div><div></div><div></div><div></div><div></div><div></div><div></div><div></div><div></div><div></div><div></div><div></div><div></div><div></div><div></div><div></div><div></div><div></div><div></div><div></div><div></div><div></div><div></div><div></div><div></div><div></div><div></div><div></div><div></div><div></div><div></div><div></div><div></div><div></div><div></div><div></div><div></div><div></div><div></div><div></div><div></div><div></div><div></div><div></div><div></div><div></div><div></div><div></div><div></div><div></div><div></div><div></div><div></div><div></div><div></div><div></div><div></div><div></div><div></div><div></div><div></div><div></div><div></div><div></div><div></div><div></div><div></div><div></div><div></div><div></div><div></div><div></div><div></div><div></div><div></div><div></div><div></div><div></div><div></div><div></div><div></div><div></div><div></div><div></div><div></div><div></div><div></div><div></div><div></div><div></div><div></div><div></div><div></div><div></div><div></div><div></div><div></div><div></div><div></div><div></div><div></div><div></div><div></div><div></div><div></div><div></div><div></div><div></div><div></div><div></div><div></div><div></div><div></div><div></div><div></div><div></div><div></div><div></div><div></div><div></div><div></div><div></div><div></div><div></div><div></div><div></div><div></div><div></div><div></div><div></div><div></div><div></div><div></div><div></div><div></div><div></div><div></div><div></div><div></div><div></div><div></div><div></div><div></div><div></div><div></div><div></div><div></div><div></div><div></div><div></div><div></div><div></div><div></div><div></div><div></div><div></div><div></div><div></div><div></div><div></div><div></div><div></div><div></div><div></div><div></div><div></div><div></div><div></div><div></div><div></div><div></div><div></div><div></div><div></div><div></div><div></div><div></div><div></div><div></div><div></div><div></div><div></div><div></div><div></div><div></div><div></div><div></div><div></div><div></div><div></div><div></div><div></div><div></div><div></div><div></div><div></div><div></div><div></div><div></div><div></div><div></div><div></div><div></div><div></div><div></div><div></div><div></div><div></div><div></div><div></div><div></div><div></div><div></div><div></div><div></div><div></div><div></div><div></div><div></div><div></div><div></div><div></div><div></div><div></div><div></div><div></div><div></div><div></div><div></div><div></div><div></div><div></div><div></div><div></div><div></div><div></div><div></div><div></div><div></div><div></div><div></div><div></div><div></div><div></div><div></div><div></div><div></div><div></div><div></div><div></div><div></div><div></div><div></div><div></div><div></div><div></div><div></div><div></div><div></div><div></div><div></div><div></div><div></div><div></div><div></div><div></div><div></div><div></div><div></div><div></div><div></div><div></div><div></div><div></div><div></div><div></div><div></div><div></div><div></div><div></div><div></div><div></div><div></div><div></div><div></div><div></div><div></div><div></div><div></div><div></div><div></div><div></div><div></div><div></div><div></div><div></div><div></div><div></div><div></div><div></div><div></div><div></div><div></div><div></div><div></div><div></div><div></div><div></div><div></div><div></div><div></div><div></div><div></div><div></div><div></div><div></div><div></div><div></div><div></div><div></div><div></div><div></div><div></div><div></div><div></div><div></div><div></div><div></div><div></div><div></div><div></div><div></div><div></div><div></div><div></div><div></div><div></div><div></div><div></div><div></div><div></div><div></div><div></div><div></div><div></div><div></div><div></div><div></div><div></div><div></div><div></div><div></div><div></div><div></div><div></div><div></div><div></div><div></div><div></div><div></div><div></div><div></div><div></div><div></div><div></div><div></div><div></div><div></div><div></div><div></div><div></div><div></div><div></div><div></div><div></div><div></div><div></div><div></div><div></div><div></div><div></div><div></div><div></div><div></div><div></div><div></div><div></div><div></div><div></div><div></div><div></div><div></div><div></div><div></div><div></div><div></div><div></div><div></div><div></div><div></div><div></div><div></div><div></div><div></div><div></div><div></div><div></div><div></div><div></div><div></div><div></div><div></div><div></div><div></div><div></div><div></div><div></div><div></div><div></div><div></div><div></div><div></div><div></div><div></div><div></div><div></div><div></div><div></div><div></div><div></div><div></div><div></div><div></div><div></div><div></div><div></div><div></div><div></div><div></div><div></div><div></div><div></div><div></div><div></div><div></div><div></div><div></div><div></div><div></div><div></div><div></div><div></div><div></div><div></div><div></div><div></div><div></div><div></div><div></div><div></div><div></div><div></div><div></div><div></div><div></div><div></div><div></div><div></div><div></div><div></div><div></div><div></div><div></div><div></div><div></div><div></div><div></div><div></div><div></div><div></div><div></div><div></div><div></div><div></div><div></div><div></div><div></div><div></div><div></div><div></div><div></div><div></div><div></div><div></div><div></div><div></div><div></div><div></div><div></div><div></div><div></div><div></div><div></div><div></div><div></div><div></div><div></div><div></div><div></div><div></div><div></div><div></div><div></div><div></div><div></div><div></div><div></div><div></div><div></div><div></div><div></div><div></div><div></div><div></div><div></div><div></div><div></div><div></div><div></div><div></div><div></div><div></div><div></div><div></div><div></div><div></div><div></div><div></div><div></div><div></div><div></div><div></div><div></div><div></div><div></div><div></div><div></div><div></div><div></div><div></div><div></div><div></div><div></div><div></div><div></div><div></div><div></div><div></div><div></div><div></div><div></div><div></div><div></div><div></div><div></div><div></div><div></div><div></div><div></div><div></div><div></div><div></div><div></div><div></div><div></div><div></div><div></div><div></div><div></div><div></div><div></div><div></div><div></div><div></div><div></div><div></div><div></div><div></div><div></div><div></div><div></div><div></div><div></div><div></div><div></div><div></div><div></div><div></div><div></div><div></div><div></div><div></div><div></div><div></div><div></div><div></div><div></div><div></div><div></div><div></div><div></div><div></div><div></div><div></div><div></div><div></div><div></div><div></div><div></div><div></div><div></div><div></div><div></div><div></div><div></div><div></div><div></div><div></div><div></div><div></div><div></div><div></div><div></div><div></div><div></div><div></div><div></div><div></div><div></div><div></div><div></div><div></div><div></div><div></div><div></div><div></div><div></div><div></div><div></div><div></div><div></div><div></div><div></div><div></div><div></div><div></div><div></div><div></div><div></div><div></div><div></div><div></div><div></div><div></div><div></div><div></div><div></div><div></div><div></div><div></div><div></div><div></div><div></div><div></div><div></div><div></div><div></div><div></div><div></div><div></div><div></div><div></div><div></div><div></div><div></div><div></div><div></div><div></div><div></div><div></div><div></div><div></div><div></div><div></div><div></div><div></div><div></div><div></div><div></div><div></div><div></div><div></div><div></div><div></div><div></div><div></div><div></div><div></div><div></div><div></div><div></div><div></div><div></div><div></div><div></div><div></div><div></div><div></div><div></div><div></div><div></div><div></div><div></div><div></div><div></div><div></div><div></div><div></div><div></div><div></div><div></div><div></div><div></div><div></div><div></div><div></div><div></div><div></div><div></div><div></div><div></div><div></div><div></div><div></div><div></div><div></div><div></div><div></div><div></div><div></div><div></div><div></div><div></div><div></div><div></div><div></div><div></div><div></div><div></div><div></div><div></div><div></div><div></div><div></div><div></div><div></div><div></div><div></div><div></div><div></div><div></div><div></div><</div></div></div></div></div>					


Rough Opening: 41 - 3/4" X 65 - 3/4"

Line #	Location:	Attributes			Item Price	Qty	Ext'd Price
20	East Stair	Lifestyle, 3-Wide Sash Set, Lifestyle, Direct Set Fixed Frame Half Circle, 91 X 107, Without HGP, Black			\$5,049.95	1	\$5,049.95
	Frame Radius = 45.5						
							
	Viewed From Exterior						
	PK #						
	2157						
		1: Non-Standard Size Fixed Sash Set Frame Size: 17 X 61 1/2 Unit Type: No Program General Information: No Package, Without Hinged Glass Panel, Clad, Pine, 5", 3 11/16" Exterior Color / Finish: Standard Enduraclad, Black Interior Color / Finish: Prefinished White Paint Interior Glass: Insulated Low-E AdvancedComfort Low-E Insulating Glass Argon Non High Altitude STC 5mm/3mm Combination Performance Information: U-Factor 0.25, SHGC 0.27, VLT 0.50, CPD PEL-N-229-01038-00001, Performance Class LC, PG 50, Calculated Positive DP Rating 50, Calculated Negative DP Rating 50, Year Rated 08 11, STC 30, OITC 28 Grille: GBG, No Custom Grille, 3/4" Contour, Traditional (1W4H), White, Black					
		2: Non-Standard Size Non-Standard Size Fixed Sash Set Frame Size: 57 X 61 1/2 Unit Type: No Program General Information: No Package, Without Hinged Glass Panel, Clad, Pine, 5", 3 11/16" Exterior Color / Finish: Standard Enduraclad, Black Interior Color / Finish: Prefinished White Paint Interior Glass: Insulated Low-E AdvancedComfort Low-E Insulating Glass Argon Non High Altitude Performance Information: U-Factor 0.24, SHGC 0.30, VLT 0.55, CPD PEL-N-229-01013-00001, Performance Class LC, PG 30, Calculated Positive DP Rating 30, Calculated Negative DP Rating 30, Year Rated 08 11, STC 28, OITC 24 Grille: No Grille,					
		3: Non-Standard Size Fixed Sash Set Frame Size: 17 X 61 1/2 Unit Type: No Program General Information: No Package, Without Hinged Glass Panel, Clad, Pine, 5", 3 11/16" Exterior Color / Finish: Standard Enduraclad, Black Interior Color / Finish: Prefinished White Paint Interior Glass: Insulated Low-E AdvancedComfort Low-E Insulating Glass Argon Non High Altitude STC 5mm/3mm Combination Performance Information: U-Factor 0.25, SHGC 0.27, VLT 0.50, CPD PEL-N-229-01038-00001, Performance Class LC, PG 50, Calculated Positive DP Rating 50, Calculated Negative DP Rating 50, Year Rated 08 11, STC 30, OITC 28 Grille: GBG, No Custom Grille, 3/4" Contour, Traditional (1W4H), White, Black					
		4: 9145.5 Fixed Frame Direct Set Half Circle Frame Size: 91 X 45 1/2 General Information: No Package, Without Hinged Glass Panel, Interior Glazed, Standard, Clad, Pine, 5", 3 11/16" Exterior Color / Finish: Standard Enduraclad, Black Interior Color / Finish: Prefinished White Paint Interior Glass: Insulated Dual Low-E AdvancedComfort Low-E Insulating Glass Argon Non High Altitude Performance Information: U-Factor 0.23, SHGC 0.28, VLT 0.53, CPD PEL-N-18-04361-00001, Performance Class AW, PG 45, Calculated Positive DP Rating 45, Calculated Negative DP Rating 45, Year Rated 08 11 Grille: GBG, No Custom Grille, 3/4" Contour, Sunburst (1W4H), White, Black Horizontal Mull 1: FactoryMull, Reinforcing Plate, Frame To Frame Width- 0", Mull Design Pressure- 20 Vertical Mull 1: FactoryMull, Standard Joining Mullion, Mull Design Pressure- 20, Overall Thru Direction- Horizontal Vertical Mull 2: FactoryMull, Standard Joining Mullion, Mull Design Pressure- 20, Overall Thru Direction- Horizontal Wrapping Information: Foldout Fins, Factory Applied, No Exterior Trim, 3 11/16", 5", Factory Applied, Pella Recommended Clearance, Perimeter Length = 357".					

Rough Opening: 91 - 3/4" X 107 - 3/4"

Customer Notes: Because Lifestyle with GBG the pattern is limited in the 1/2 Circle

Line #	Location:	Attributes		
25	Main Floor	Lifestyle, Double Hung, 41 X 71, Without HGP, Black		
			Item Price	Qty
			\$1,343.02	6
				Ext'd Price
				\$8,058.12



Viewed From Exterior

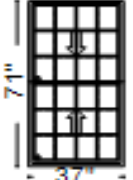
PK #
2157

1: 4171 Double Hung, Equal
Frame Size: 41 X 71
Unit Type: No Program
General Information: No Package, Without Hinged Glass Panel, Clad, Pine, 5", 3 11/16", Jambliner Color: **Gray**
Exterior Color / Finish: **Standard Enduraclad, Black**
Interior Color / Finish: **Prefinished White Paint Interior**
Glass: **Insulated Tempered Low-E AdvancedComfort Low-E Insulating Glass Argon Non High Altitude STC 5mm/3mm Combination**
Hardware Options: **Cam-Action Lock, 2 Locks, Matte Black, No Limited Opening Hardware, Order Sash Lift, 2 Lifts, No Integrated Sensor**
Screen: **Full Screen, Black, InView™**
Performance Information: **U-Factor 0.27, SHGC 0.26, VLT 0.48, CPD PEL-N-35-00451-00001, Performance Class LC, PG 30, Calculated Positive DP Rating 30, Calculated Negative DP Rating 30, Year Rated 08/11, STC 31, OITC 27, Clear Opening Width 37.812, Clear Opening Height 32.25, Clear Opening Area 8.468312, Egress Meets Typical 5.7 sqft (E) (United States Only)**
Grille: **GBG, No Custom Grille, 3/4" Contour, Traditional (4W3H / 4W3H), White, Black**
Wrapping Information: **Foldout Fins, Factory Applied, No Exterior Trim, 3 11/16", 5", Factory Applied, Pella Recommended Clearance, Perimeter Length = 224".**

Rough Opening: 41 - 3/4" X 71 - 3/4"

Customer Notes: Tempered Glass with WOCD due to fall prevention hardware

Line #	Location:	Attributes		
28	Main Floor Front	Lifestyle, Double Hung, 37 X 71, Without HGP, Black		
			Item Price	Qty
			\$1,303.91	4
				Ext'd Price
				\$5,215.64




Viewed From Exterior

PK #
2157

1: 3771 Double Hung, Equal
Frame Size: 37 X 71
Unit Type: No Program
General Information: No Package, Without Hinged Glass Panel, Clad, Pine, 5", 3 11/16", Jambliner Color: **Gray**
Exterior Color / Finish: **Standard Enduraclad, Black**
Interior Color / Finish: **Prefinished White Paint Interior**
Glass: **Insulated Tempered Low-E AdvancedComfort Low-E Insulating Glass Argon Non High Altitude STC 5mm/3mm Combination**
Hardware Options: **Cam-Action Lock, 2 Locks, Matte Black, No Limited Opening Hardware, Order Sash Lift, 2 Lifts, No Integrated Sensor**
Screen: **Full Screen, Black, InView™**
Performance Information: **U-Factor 0.27, SHGC 0.26, VLT 0.48, CPD PEL-N-35-00451-00001, Performance Class LC, PG 30, Calculated Positive DP Rating 30, Calculated Negative DP Rating 30, Year Rated 08/11, STC 31, OITC 27, Clear Opening Width 33.812, Clear Opening Height 32.25, Clear Opening Area 7.572479, Egress Meets Typical 5.7 sqft (E) (United States Only)**
Grille: **GBG, No Custom Grille, 3/4" Contour, Traditional (4W3H / 4W3H), White, Black**
Wrapping Information: **Foldout Fins, Factory Applied, No Exterior Trim, 3 11/16", 5", Factory Applied, Pella Recommended Clearance, Perimeter Length = 216".**


Rough Opening: 37 - 3/4" X 71 - 3/4"

Customer Notes: Tempered Glass with WOCD due to fall prevention hardware

Line #	Location:	Attributes		
32	Rear Center	Lifestyle, 3-Wide Double Hung, 96 X 47.5, Without HGP, Black		
		Item Price	Qty	Ext'd Price
		\$2,377.93	1	\$2,377.93
 <p>PK # 2157</p> <p>Viewed From Exterior</p>		<p>1: 27.547.5 Double Hung, Equal Frame Size: 27 1/2 X 47 1/2 Unit Type: No Program General Information: No Package, Without Hinged Glass Panel, Clad, Pine, 5", 3 11/16", Jambliner Color: Gray Exterior Color / Finish: Standard Enduraclad, Black Interior Color / Finish: Prefinished White Paint Interior Glass: Insulated Low-E AdvancedComfort Low-E Insulating Glass Argon Non High Altitude STC 5mm/3mm Combination Hardware Options: Cam-Action Lock, 1 Lock, Matte Black, No Limited Opening Hardware, Order Sash Lift, 1 Lift, No Integrated Sensor Screen: Full Screen, Black, InView™ Performance Information: U-Factor 0.27, SHGC 0.26, VLT 0.48, CPD PEL-N-35-00451-00001, Performance Class LC, PG 50, Calculated Positive DP Rating 50, Calculated Negative DP Rating 50, Year Rated 08 11, STC 31, OITC 27, Clear Opening Width 24.312, Clear Opening Height 20.5, Clear Opening Area 3.461083, Egress Does not meet typical United States egress, but may comply with local code requirements Grille: GBG, No Custom Grille, 3/4" Contour, Traditional (3W2H / 3W2H), White, Black</p> <p>2: 4147.5 Fixed Sash Set Frame Size: 41 X 47 1/2 General Information: No Package, Without Hinged Glass Panel, Clad, Pine, 5", 3 11/16" Exterior Color / Finish: Standard Enduraclad, Black Interior Color / Finish: Prefinished White Paint Interior Glass: Insulated Low-E AdvancedComfort Low-E Insulating Glass Argon Non High Altitude STC 5mm/3mm Combination Performance Information: U-Factor 0.24, SHGC 0.30, VLT 0.55, CPD PEL-N-229-01037-00001, Performance Class LC, PG 30, Calculated Positive DP Rating 30, Calculated Negative DP Rating 30, Year Rated 08 11, STC 30, OITC 28 Grille: No Grille,</p> <p>3: 27.547.5 Double Hung, Equal Frame Size: 27 1/2 X 47 1/2 Unit Type: No Program General Information: No Package, Without Hinged Glass Panel, Clad, Pine, 5", 3 11/16", Jambliner Color: Gray Exterior Color / Finish: Standard Enduraclad, Black Interior Color / Finish: Prefinished White Paint Interior Glass: Insulated Low-E AdvancedComfort Low-E Insulating Glass Argon Non High Altitude STC 5mm/3mm Combination Hardware Options: Cam-Action Lock, 1 Lock, Matte Black, No Limited Opening Hardware, Order Sash Lift, 1 Lift, No Integrated Sensor Screen: Full Screen, Black, InView™ Performance Information: U-Factor 0.27, SHGC 0.26, VLT 0.48, CPD PEL-N-35-00451-00001, Performance Class LC, PG 50, Calculated Positive DP Rating 50, Calculated Negative DP Rating 50, Year Rated 08 11, STC 31, OITC 27, Clear Opening Width 24.312, Clear Opening Height 20.5, Clear Opening Area 3.461083, Egress Does not meet typical United States egress, but may comply with local code requirements Grille: GBG, No Custom Grille, 3/4" Contour, Traditional (3W2H / 3W2H), White, Black Vertical Mull 1: FactoryMull, Standard Joining Mullion, Mull Design Pressure- 20, Overall Thru Direction- Vertical Vertical Mull 2: FactoryMull, Standard Joining Mullion, Mull Design Pressure- 20, Overall Thru Direction- Vertical Wrapping Information: Foldout Fins, Factory Applied, No Exterior Trim, 3 11/16", 5", Factory Applied, Pella Recommended Clearance, Perimeter Length = 287".</p>		


Rough Opening: 96 - 3/4" X 48 - 1/4"

Customer Notes: This unit has been revised to Counter height

Line #	Location:	Attributes			Item Price	Qty	Ext'd Price
35	East and West	Lifestyle, Direct Set, Lifestyle, Direct Set, Lifestyle, Direct Set, 271.5 X 23, Without HGP, Black			\$3,282.18	2	\$6,564.36
		1: 8723 Fixed Frame Direct Set Frame Size: 87 X 23 General Information: No Package, Without Hinged Glass Panel, Interior Glazed, Standard, Clad, Pine, 5", 3 11/16" Exterior Color / Finish: Standard Enduraclad, Black Interior Color / Finish: Prefinished White Paint Interior Glass: Insulated Dual Low-E AdvancedComfort Low-E Insulating Glass Argon Non High Altitude Performance Information: U-Factor 0.23, SHGC 0.29, VLT 0.53, CPD PEL-N-18-04337-00001, Performance Class AW, PG 60, Calculated Positive DP Rating 60, Calculated Negative DP Rating 60, Year Rated 08 11, STC 28, OITC 24 Grille: GBG, No Custom Grille, 3/4" Contour, Traditional (9W2H), White, Black					
		2: 8723 Fixed Frame Direct Set Frame Size: 87 X 23 General Information: No Package, Without Hinged Glass Panel, Interior Glazed, Standard, Clad, Pine, 5", 3 11/16" Exterior Color / Finish: Standard Enduraclad, Black Interior Color / Finish: Prefinished White Paint Interior Glass: Insulated Dual Low-E AdvancedComfort Low-E Insulating Glass Argon Non High Altitude Performance Information: U-Factor 0.23, SHGC 0.29, VLT 0.53, CPD PEL-N-18-04337-00001, Performance Class AW, PG 60, Calculated Positive DP Rating 60, Calculated Negative DP Rating 60, Year Rated 08 11, STC 28, OITC 24 Grille: GBG, No Custom Grille, 3/4" Contour, Traditional (9W2H), White, Black					
PK # 2157 Viewed From Exterior		3: 8723 Fixed Frame Direct Set Frame Size: 87 X 23 General Information: No Package, Without Hinged Glass Panel, Interior Glazed, Standard, Clad, Pine, 5", 3 11/16" Exterior Color / Finish: Standard Enduraclad, Black Interior Color / Finish: Prefinished White Paint Interior Glass: Insulated Dual Low-E AdvancedComfort Low-E Insulating Glass Argon Non High Altitude Performance Information: U-Factor 0.23, SHGC 0.29, VLT 0.53, CPD PEL-N-18-04337-00001, Performance Class AW, PG 60, Calculated Positive DP Rating 60, Calculated Negative DP Rating 60, Year Rated 08 11, STC 28, OITC 24 Grille: GBG, No Custom Grille, 3/4" Contour, Traditional (9W2H), White, Black Vertical Mull 1: AlignedWith, 5.25" Vertical Mull 2: AlignedWith, 5.25" Wrapping Information: Foldout Fins, Factory Applied, No Exterior Trim, 3 11/16", 5", Factory Applied, Pella Recommended Clearance, Perimeter Length = 589".					


Rough Opening: 87 - 3/4" X 23 - 3/4"

Customer Notes: 3 Sperate Units to allow for stud pockets

Line #	Location:	Attributes			
40	North and South	Lifestyle, Direct Set, Lifestyle, Direct Set, 153.25 X 23, Without HGP, Black	Item Price	Qty	Ext'd Price
			\$2,041.20	2	\$4,082.40
					
	PK #	1: 7423 Fixed Frame Direct Set			
	2157	Frame Size: 74 X 23			
		General Information: No Package, Without Hinged Glass Panel, Interior Glazed, Standard, Clad, Pine, 5", 3 11/16"			
		Exterior Color / Finish: Standard Enduraclad, Black			
		Interior Color / Finish: Prefinished White Paint Interior			
		Glass: Insulated Dual Low-E AdvancedComfort Low-E Insulating Glass Argon Non High Altitude STC 5mm/3mm Combination			
		Performance Information: U-Factor 0.23, SHGC 0.28, VLT 0.53, CPD PEL-N-18-04353-00001, Performance Class AW, PG 60, Calculated Positive DP Rating 60, Calculated Negative DP Rating 60, Year Rated 08 11, STC 31, OITC 26			
		Grille: GBG, No Custom Grille, 3/4" Contour, Traditional (8W2H), White, Black			
		2: 7423 Fixed Frame Direct Set			
		Frame Size: 74 X 23			
		General Information: No Package, Without Hinged Glass Panel, Interior Glazed, Standard, Clad, Pine, 5", 3 11/16"			
		Exterior Color / Finish: Standard Enduraclad, Black			
		Interior Color / Finish: Prefinished White Paint Interior			
		Glass: Insulated Dual Low-E AdvancedComfort Low-E Insulating Glass Argon Non High Altitude STC 5mm/3mm Combination			
		Performance Information: U-Factor 0.23, SHGC 0.28, VLT 0.53, CPD PEL-N-18-04353-00001, Performance Class AW, PG 60, Calculated Positive DP Rating 60, Calculated Negative DP Rating 60, Year Rated 08 11, STC 31, OITC 26			
		Grille: GBG, No Custom Grille, 3/4" Contour, Traditional (8W2H), White, Black			
		Vertical Mull 1: AlignedWith, 5.25"			
		Wrapping Information: Foldout Fins, Factory Applied, No Exterior Trim, 3 11/16", 5", Factory Applied, Pella Recommended Clearance, Perimeter Length = 353"			
	Viewed From Exterior				

Rough Opening: 74 - 3/4" X 23 - 3/4"

Customer Notes: 2 Seperate Units to allow for stud pockets

Line # Location:		Attributes			
45	Tape	01HM0000 - Pella 3" Pella Installation Tape, 150 ft	<u>Item Price</u>	<u>Qty</u>	<u>Ext'd Price</u>
			\$49.39	4	\$197.56
<div><div></div><div><p>PK #</p><p>2157</p></div></div>					
<div><div><p>Viewed From Exterior</p></div><div><p>1: Pella Parts Catalog</p><p>Pella Parts Selector: Installation Accessories, Double Hung, Installation Tape / Foam / Shims, Pella Lifestyle Series, Unhanded, 01HM0000, 3" Pella Installation Tape, 150 ft, 01HM0000,</p></div></div>					

Rough Opening: 10" X 10.5"

Customer Notes: Inmstall Tape

Line #	Location:	Attributes		
50	WOCD	0597MB00 - Pella Architect Series Model 5, 6 WOCD	<u>Item Price</u>	<u>Qty</u> <u>Ext'd Price</u>
			\$31.18	10 \$311.80



1: Pella Parts Catalog - Templates Search
Pella Parts Selector: Part Number, 0597MB00, Architect Series Model 5, 6 WOCD, 0597MB00,

PK #
2157

Viewed From Exterior

Customer Notes: Fall Prevention hardware for 10 Double Hung

Thank You For Purchasing Pella® Products

PELLA WARRANTY:

Pella products are covered by Pella's limited warranties in effect at the time of sale. All applicable product warranties are incorporated into and become a part of this contract. Please see the warranties for complete details, taking special note of the two important notice sections regarding installation of Pella products and proper management of moisture within the wall system. Neither Pella Corporation nor the Seller will be bound by any other warranty unless specifically set out in this contract. However, Pella Corporation will not be liable for branch warranties which create obligations in addition to or obligations which are inconsistent with Pella written warranties.

Clear opening (egress) information does not take into consideration the addition of a Rolscreen [or any other accessory] to the product. You should consult your local building code to ensure your Pella products meet local egress requirements.

Per the manufacturer's limited warranty, unfinished mahogany exterior windows and doors must be finished upon receipt prior to installing and refinished annually, thereafter. Variations in wood grain, color, texture or natural characteristics are not covered under the limited warranty.

INSYNCTIVE PRODUCTS: In addition, Pella Insynctive Products are covered by the Pella Insynctive Products Software License Agreement and Pella Insynctive Products Privacy Policy in effect at the time of sale, which can be found at [Insynctive.pella.com](https://www.pella.com/insynctive). By installing or using Your Insynctive Products you are acknowledging the Insynctive Software Agreement and Privacy Policy are part of the terms of sale.

Notice of Collection of Personal Information: We may collect your personal information when you interact with us. Under the California Consumer Privacy Act (CCPA), California residents have specific rights to request this information, request to delete this information, and opt out of the sharing or sale of this information to third parties. To learn more about our collection practices and your rights under the CCPA please visit our link <https://www.pella.com/california-rights-policy/> at [pella.com](https://www.pella.com).

ARBITRATION AND CLASS ACTION WAIVER ("ARBITRATION AGREEMENT")

YOU and Pella and its subsidiaries and the Pella Branded Distributor AGREE TO ARBITRATE DISPUTES ARISING OUT OF OR RELATING TO YOUR PELLA PRODUCTS (INCLUDES PELLA GOODS AND PELLA SERVICES) AND WAIVE THE RIGHT TO HAVE A COURT OR JURY DECIDE DISPUTES. YOU WAIVE ALL RIGHTS TO PROCEED AS A MEMBER OR REPRESENTATIVE OF A CLASS ACTION, INCLUDING CLASS ARBITRATION, REGARDING DISPUTES ARISING OUT OF OR RELATING TO YOUR PELLA PRODUCTS. You may opt out of this Arbitration Agreement by providing notice to Pella no later than ninety (90) calendar days from the date You purchased or otherwise took ownership of Your Pella Goods. To opt out, You must send notice by e-mail to pellawebsupport@pella.com, with the subject line: "Arbitration Opt Out" or by calling (877) 473-5527. Opting out of the Arbitration Agreement will not affect the coverage provided by any applicable limited warranty pertaining to Your Pella Products. For complete information, including the full terms and conditions of this Arbitration Agreement, which are incorporated herein by reference, please visit www.pella.com/arbitration or e-mail to pellawebsupport@pella.com, with the subject line: "Arbitration Details" or call (877) 473-5527. D'ARBITRAGE ET RENONCIATION AU RECOURS COLLECTIF ("convention d'arbitrage") EN FRANÇAIS SEE [PELLA.COM/ARBITRATION](https://www.pella.com/arbitration). DE ARBITRAJE Y RENUNCIA COLECTIVA ("acuerdo de arbitraje") EN ESPAÑOL VER [PELLA.COM/ARBITRATION](https://www.pella.com/arbitration).

Seller shall not be held liable for failure or delay in the performance of its obligations under this Agreement, if such performance is hindered or delayed by the occurrence of an act or event beyond the Seller's reasonable control (force majeure event), including but not limited to earthquakes, unusually severe weather and other Acts of God, fire, strikes and labor unrest, epidemics, riots, war, civil unrest, and government interventions. Seller shall give timely notice of a force majeure event and take such reasonable action to mitigate the impacts of such an event.

Product Performance Information:

U-Factor, Solar Heat Gain Coefficient (SHGC), and Visible Light Transmittance (VLT) are certified by the National Fenestration Rating Council (NFRC).

For more information regarding the finishing, maintenance, service and warranty of all Pella® products, visit the Pella® website at www.pella.com

Manufacturer stipulates that these ratings conform to applicable NFRC procedures for determining whole product performance. NFRC ratings are determined for a fixed set of environmental conditions and a specific product size. NFRC does not recommend any products and does not warrant the suitability of any product for any specific use.

Design Pressure (DP), Performance Class, and Performance Grade (PG) are certified by a third party organization, in many cases the Window and Door Manufacturers Association (WDMA). The certification requires the performance of at least one product of the product line to be tested in accordance with the applicable performance standards and verified by an independent party. The certification indicates that the product(s) of the product line passed the applicable tests. The certification does not apply to mulled and/or product combinations unless noted. Actual product results will vary and change over the products life.

For more performance information along with information on Florida Product Approval System (FPAS) Number and Texas Dept. of Insurance (TDI) number go to www.pella.com/performance.

Including during the construction period, casement windows should never be left open and unlocked for prolong periods or during high wind conditions to avoid sash detachment/damage.

Actual sizes tested for documented STC and OITC ratings may vary from the ASTM E 1425 sizes to better represent Pella product offering.

STC and OITC ratings shown may be conservatively based on products tested with thinner panes of glass.

STC and OITC ratings may be from test results from an equivalent product.

Refer to Pella Corporate Warranty

This form constitutes a contract between Buyer and the Seller Pella Products Inc. Prices are subject to change anytime after 5 days following date of estimate and do not guarantee availability of any product listed. Pella Products Inc. management has final authority on acceptance of this order. Your signature confirms the accuracy of the product(s) chosen.

Pella Products assumes no responsibility for accuracy of take offs from drawings or blueprints or that the products listed will be sufficient to complete customer's intended project. The Buyer agrees that the product(s) listed herein are correct, final and cannot be changed, returned or canceled.

All units are special order from the manufacturer. These units are sized and specified for your specific project. No units are of "stock" nature.

Deposits are partial payment of the contract and are not refundable. The Buyer agrees that if paying by credit card that authorization is granted to the Seller to debit the Buyers credit card by signing this contract. The Buyer agrees that payment discounts do not apply when paying with a credit card. A 1-1/2% SERVICE CHARGE per month (18% PER ANNUM) will be added to all outstanding balances past our stated terms, plus lawyer and account fees for collecting outstanding accounts.

The Buyer agrees that the "customer delivery date" is a realistic estimate of when the product will be delivered. Items remaining in our warehouse for more than 30 days beyond the agreed upon delivery date will be subject to a charge of 10% of the total cost of the order and will be applied to any remaining balance due. An additional 10% charge will be incurred every 30 days that the product remains held at our warehouse and will continue to be applied to the remaining balance until the order has been paid in full. At this point the order will be subject to a storage and handling fee of 1% of the net amount of the order (\$25.00 minimum charge).

The Buyer agrees that the product can be delivered without the Buyer present and agrees to accept the shipping documents as proof of delivery. The Buyer agrees not to hold the Seller responsible for any damage to driveways, sidewalks, trees and overhead wires caused by the Seller's delivery vehicles. Additionally, the driver will park the truck as close to the delivery destination as is feasible based solely on the determination of the driver. The Buyer agrees that the delivery driver will move product to ground level at the tailgate of the truck and it is the responsibility of the Buyer to arrange for the product to be moved to a more permanent location on site.

The Buyer agrees to examine the product(s) upon delivery and within 7 DAYS OF DELIVERY provide the Seller notice of any discrepancy between the product(s) ordered and the products(s) delivered, including hardware. If the Buyer does not provide notice within 7 days the Buyer accepts the product(s) as is.

If Buyer is a **Third Party Contractor** the Third Party Contractor warrants and represents that the products purchased herein from Seller meet or exceed the regular requirements required by the Vermont Residential Building Energy Standards (RBES) for the year of installation. Buyer, Third Party Contractor, further warrants and represents that Pella Products Inc. is not the builder or contractor, and is not responsible for completing or providing any RBES certificate for this project. Buyer further agrees to indemnify, defend, and hold harmless Seller for any and all claims that may result from the Vermont Residential Building Energy Standards.

If Buyer is the **Vermont Home-Owner/Builder**, the Vermont Home-Owner/Builder warrants and represents that the products purchased herein from Seller satisfy the Vermont Residential Building Energy Standards (RBES) for the year of installation or that the Home-Owner/Builder qualifies as a Home-Owner/Builder as defined under the RBES and the Home-Owner/ Builder intends to provide an Owner/Builder Disclosure Statement upon any future sale. Home-Owner further understands and acknowledges that Pella Products Inc. is not the builder or contractor, and is not responsible for completing or providing any RBES certificate for the project. The Vermont Home-Owner/Builder further agrees to indemnify, defend, and hold harmless Seller for any and all claims that may result from the Vermont Residential Building Energy Standards.

SERVICE LABOR WARRANTY: The standard Pella Service Warranty applies. Please note that any costs for equipment, scaffolding and safety equipment that is required to obtain access for large or to inaccessible units will be at cost of homeowner, even if these costs are incurred during the labor warranty period.

I hereby authorize Pella Products, Inc (the "Corporation)", its affiliates and/or subsidiaries to use, reproduce, and/or publish photographs and/or video that may pertain to me and my project, including materials described below, without compensation. I understand that this material may be used in various communications (e.g. Website, e-newsletters, promotional materials, etc).

*Consequently, the Corporation may publish materials, photographs, and/or make reference to the project in a manner that the Corporation or project sponsor deems appropriate. If you would like to **opt in of** the above initial here ____*

☐ **Project Checklist has been reviewed**

Customer Name (Please print)

Pella Sales Rep Name (Please print)

Customer Signature

Pella Sales Rep Signature

Date

Date

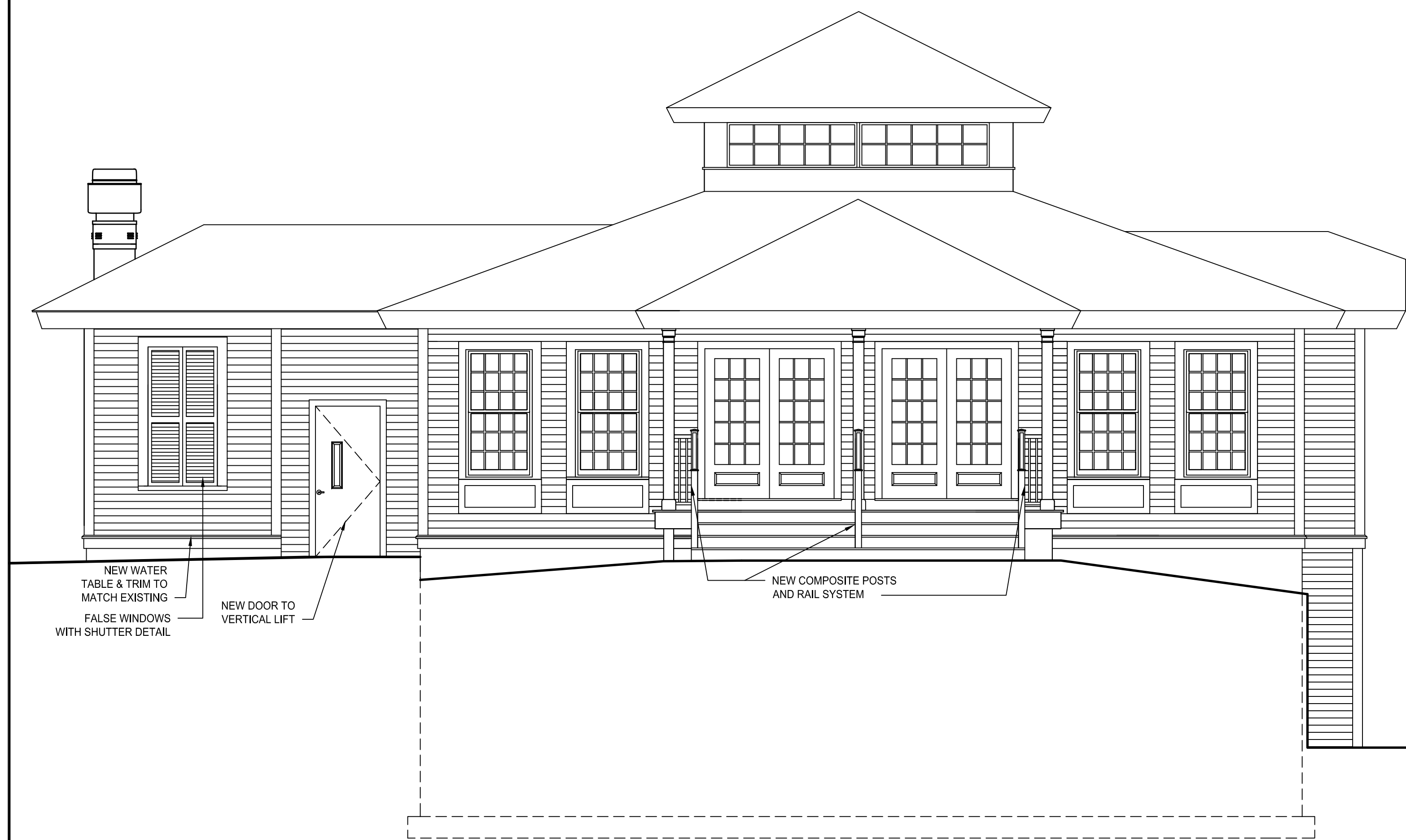
Credit Card Approval Signature

Order Totals

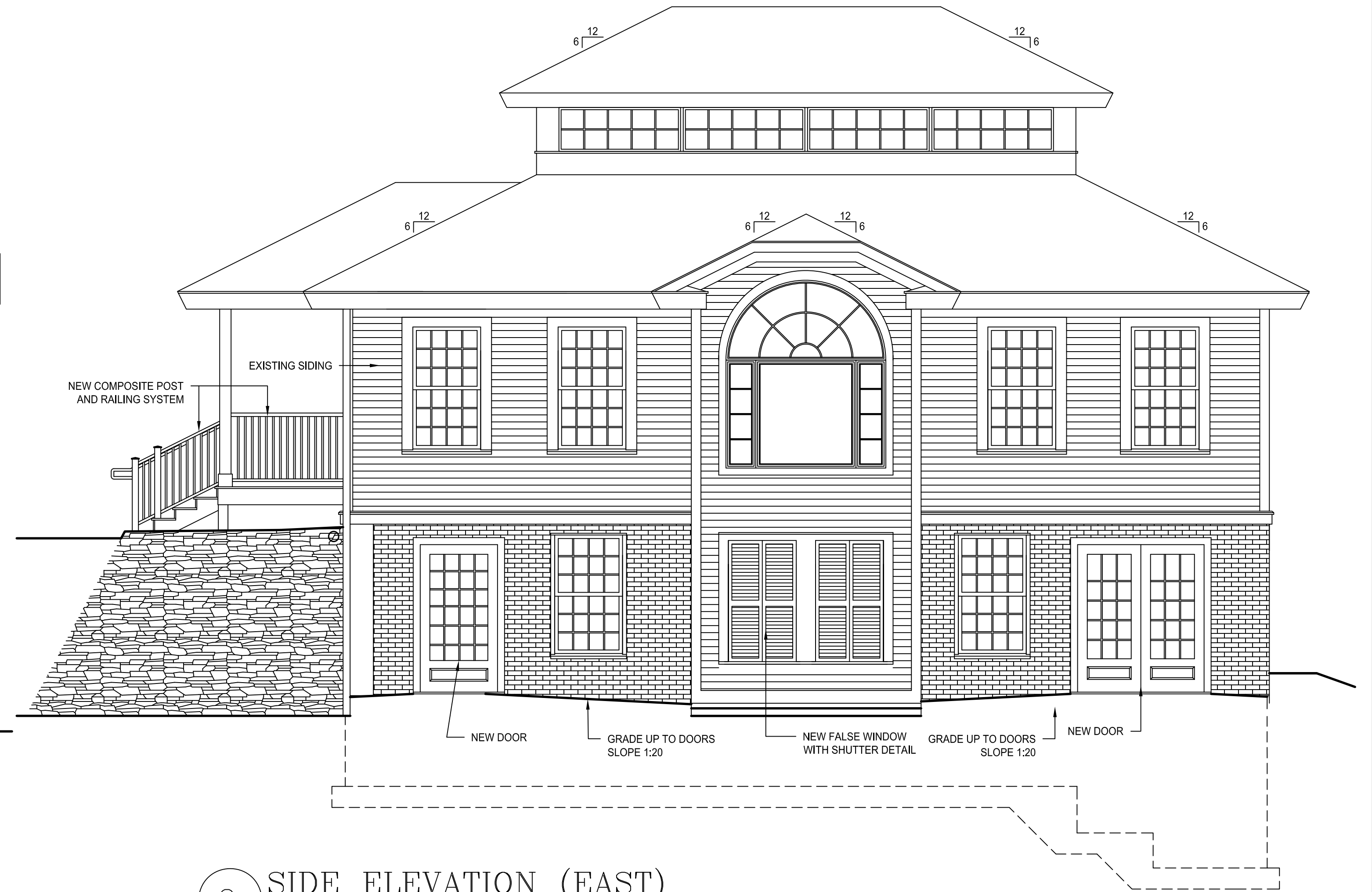
Taxable Subtotal	\$39,815.24
Sales Tax @ 6.25%	\$2,488.45
Non-taxable Subtotal	\$0.00
Total	\$42,303.69
Deposit Received	\$0.00
Amount Due	\$42,303.69

REFERENCE PHOTOS:

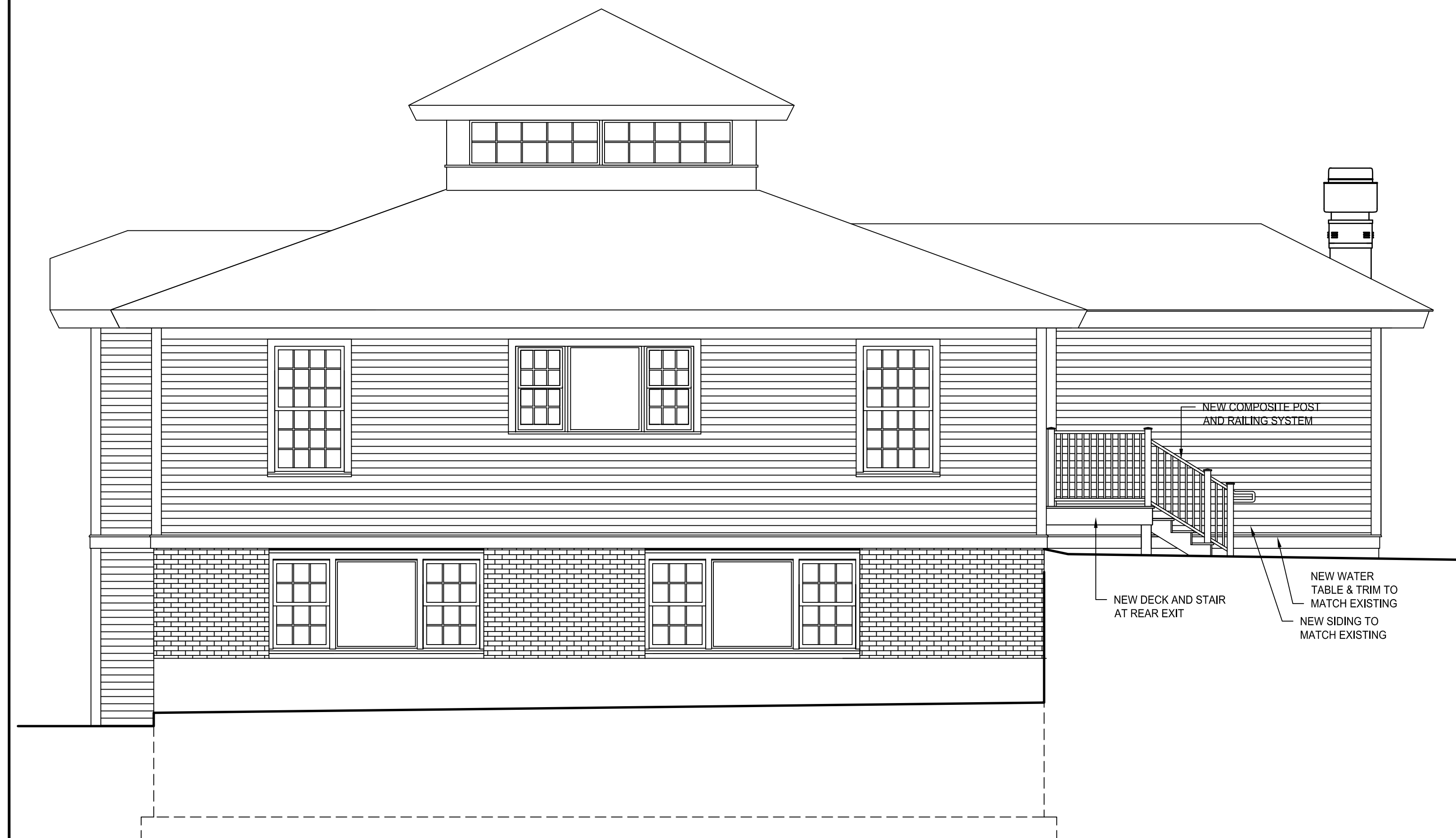




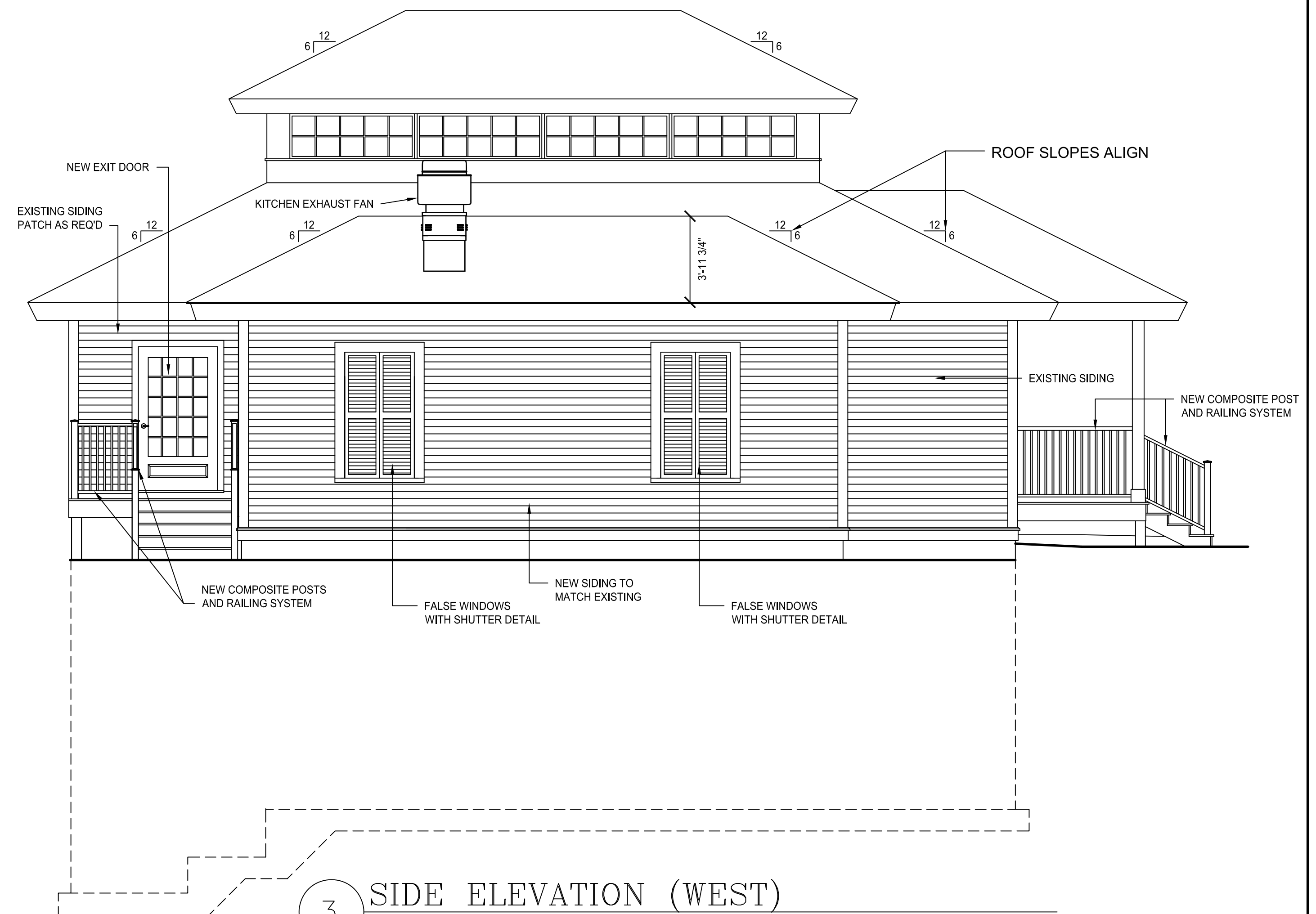
1 FRONT ELEVATION (SOUTH)
SCALE 1/4" = 1'-0"



2 SIDE ELEVATION (EAST)
SCALE 1/4" = 1'-0"



2 REAR ELEVATION (NORTH)
SCALE 1/4" = 1'-0"



3 SIDE ELEVATION (WEST)
SCALE 1/4" = 1'-0"

REVISION	DATE	DRAWN	CHECKED	DESCRIPTION

HDC APPROVAL

BARRY ARCHITECTS, INC.
29 WENDELL AVENUE
PITTSFIELD, MASSACHUSETTS
TELEPHONE: (413) 443-8033
FAX: (413) 448-6512

SCALE	AS NOTED
DRAWN	HMP
CHECKED	JJB
DATE	2/14/24

EXTERIOR ELEVATIONS
BUILDING RENOVATIONS FOR
NEW EVENT SPACE
51 CHURCH STREET
LENEX, MASSACHUSETTS

FILE NUMBER
2332

A201